

# PNY

## PNY GeForce RTX™ 5080 16GB

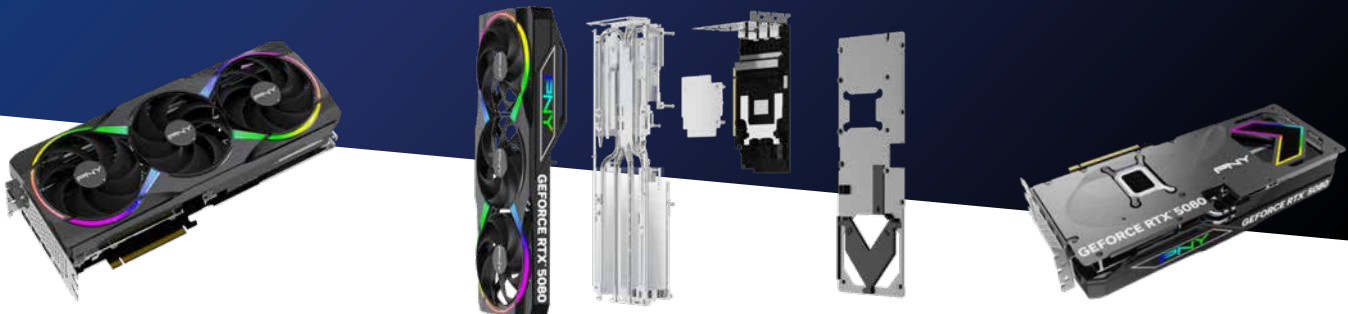
ARGB Triple Fan DLSS 4

VCG508016TFXXPB1



### GAME CHANGER

Gear up for game-changing experiences with the NVIDIA GeForce RTX™ 5080 and AI-powered DLSS 4. Built with NVIDIA® Blackwell and equipped with blistering-fast GDDR7 memory, it lets you run the most graphically demanding games and creative applications with stunning fidelity and performance. With NVIDIA Studio you can bring your creative projects to life faster than ever.



#### NVIDIA Blackwell Architecture

The Ultimate Platform for Gamers and Creators

#### Fifth-Gen Tensor Cores

Max AI performance with FP4 and DLSS 4

#### Fourth-Gen Ray Tracing Cores

Built for Mega Geometry



## SOLID PHYSICAL CONNECTION

The top two screws shown in the picture above are physically mounted to the cooler, providing a solid physical connection between the mounting bracket and the cooling solution.



## EXCELLENT PERFORMANCE

Excellent thermal performance keeping the GPU temperature lower during operating, and super quiet.



## TRIPLE FAN COOLING

With three fans working together, heat is distributed and dissipated more efficiently across the GPU surface



## CUSTOMIZABLE LIGHTING

Featuring electrifying EPIC-X RGB lighting, for the ultimate controllable lighting experience with endless ARGB lighting possibilities (EPIC-X RGB versions only).

## KEY FEATURES

- NVIDIA DLSS 4
- NVIDIA Reflex 2
- GDDR7 Graphics Memory
- NVIDIA® App
- PCI Express® Gen 5
- NVIDIA Broadcast

## SYSTEM REQUIREMENTS

- PCI Express-compliant motherboard with one 3.0-width x16 graphics slot
- Three 8-pin supplementary power connectors
- 850 W or greater system power supply<sup>2</sup>
- Microsoft Windows® 11 64-bit, Windows 10 64-bit, Linux 64-bit
- Internet connection<sup>1</sup>

## PRODUCT SPECIFICATIONS

NVIDIA® CUDA Cores	10752
Clock Speed	2295 MHz
Boost Speed	2617 MHz
Memory Speed (Gbps)	30
Memory Size	16GB GDDR7
Memory Interface	256-bit
Memory Bandwidth (GB/s)	960
TDP	360 W
Outputs	DisplayPort 2.1b with UHBR20 (x3), HDMI 2.1b
Multi-Screen	4
Resolution	4K 480Hz or 8K 165Hz with DSC
Power Input	1x16 (1x16 to 3x8 adapter included)
Bus Type	PCI-Express 5.0 x16

## PRODUCT INFORMATION

PNY Part Number	VCG508016TFXXPB1
UPC Code	751492794259
Card Dimensions	12.94" x 5.42" x 2.35"; 3 Slot
Box Dimensions	15.94" x 7.83" x 4.05

1 Graphics Card driver is not included in the box; NVIDIA App will download the latest GeForce driver from the Internet after install.

2 Power requirements can be different depending on system configuration.

PNY Technologies, Inc. 100 Jefferson Road, Parsippany, NJ 07054 | Tel 973-515-9700 | Fax 973-560-5590 | [WWW.PNY.COM](http://www.pny.com)

Features and specifications subject to change without notice. The PNY logo is a registered trademark of PNY Technologies, Inc. All other trademarks are the property of their respective owners. © 2025 PNY Technologies, Inc. All rights reserved.

©2025 NVIDIA Corporation. NVIDIA, the NVIDIA logo, GeForce, GeForce Experience, GeForce RTX, and G-SYNC are registered trademarks and/or trademarks of NVIDIA Corporation in the United States and other countries. All other trademarks and copyrights are the property of their respective owners.

